



OVERVIEW

Accomplish your designs faster!

GstarCAD 2018



Accomplish Your Designs Faster!

With great software performance and more efficient design tools, GstarCAD 2018 offers brand new experience in both architectural and mechanical design!

Performance	Compatibility	New & Innovative Functions
Great running speed and stability with significant optimization and improvement in operating performance.	Support the latest DWG 2018 format together with more compatible features.	New productive and practical innovations help to accomplish designs faster.

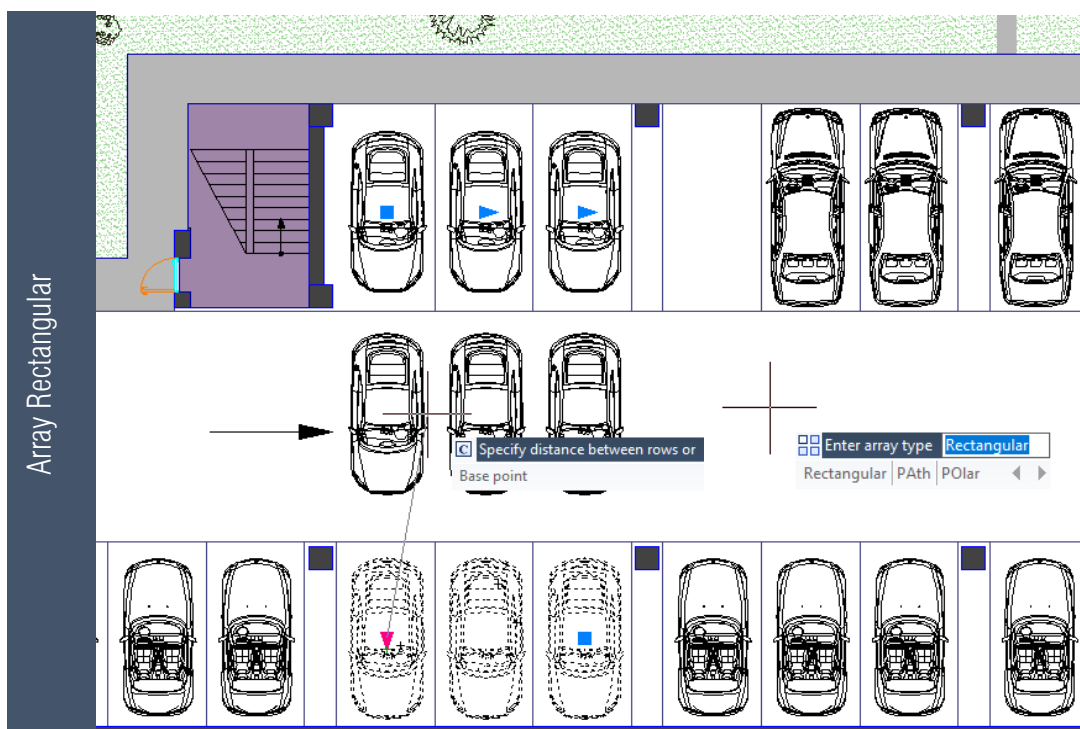
Performance Optimization

The performance optimization plays an important role in GstarCAD 2018. The performance of common-use operations like "OPEN", "QSAVE", "PLOT", "CLIP", "TRIM", "PASTE", "MOVE", "DYNAMIC SELECTION", and more commands are significantly enhanced. The overall drawing performance is even better than AutoCAD when handling big drawings.

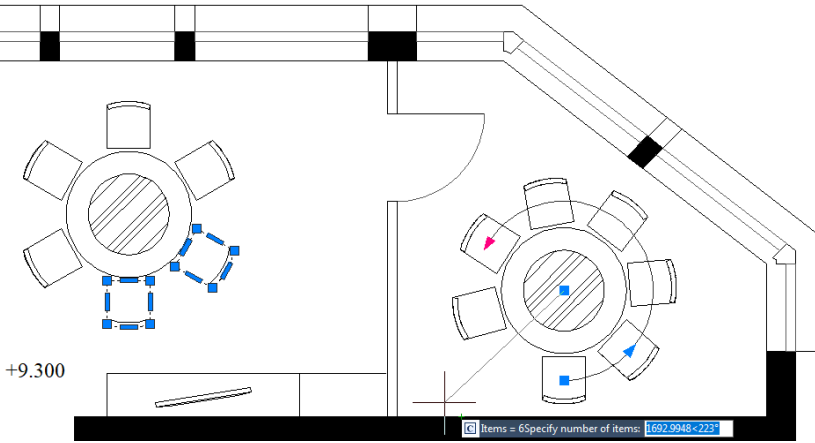
New Features for Efficient Design

Array Options

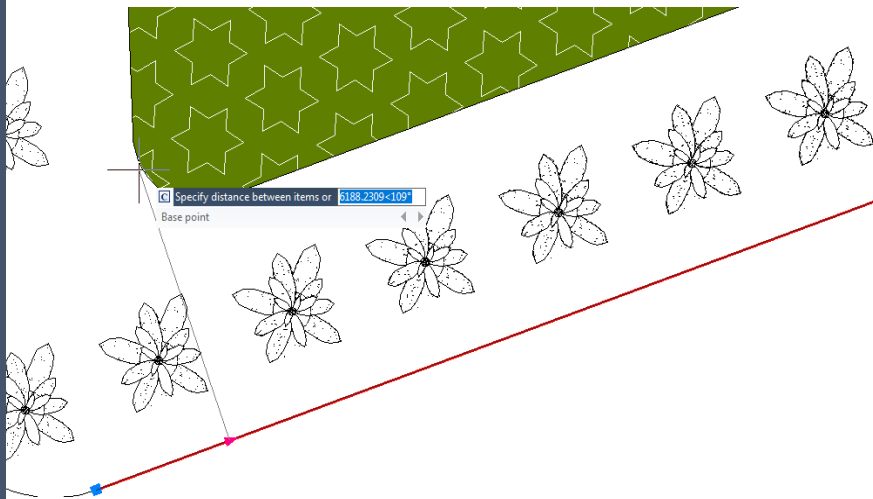
New array options are available to create copies of objects arranged in RECTANGULAR, POLAR, or PATH pattern. The new array object is a whole (dynamic block). It can be dynamically adjusted by number of objects, spacing and other related parameters through Ribbon panel and Multifunctional Grips.



Array Polar



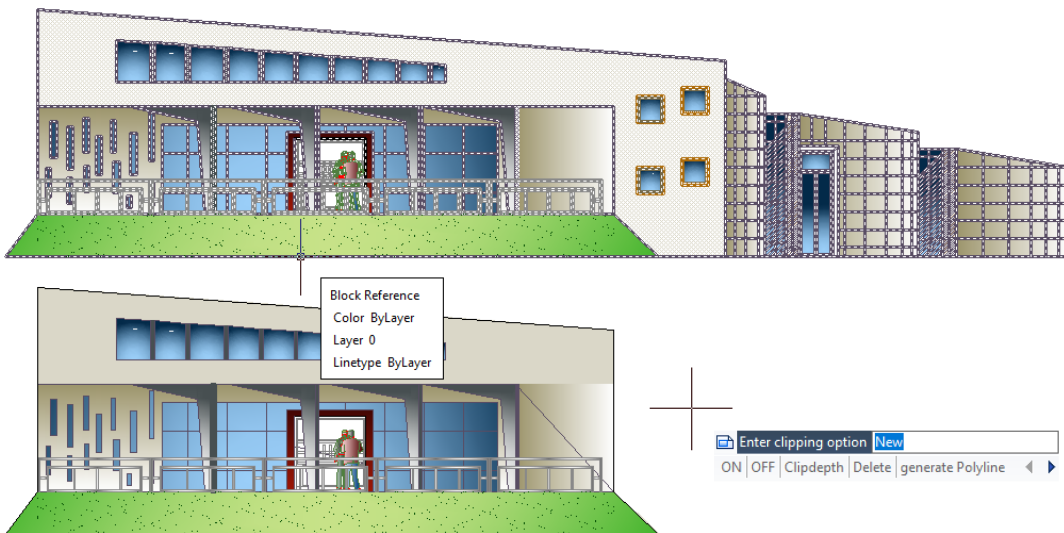
Array Path

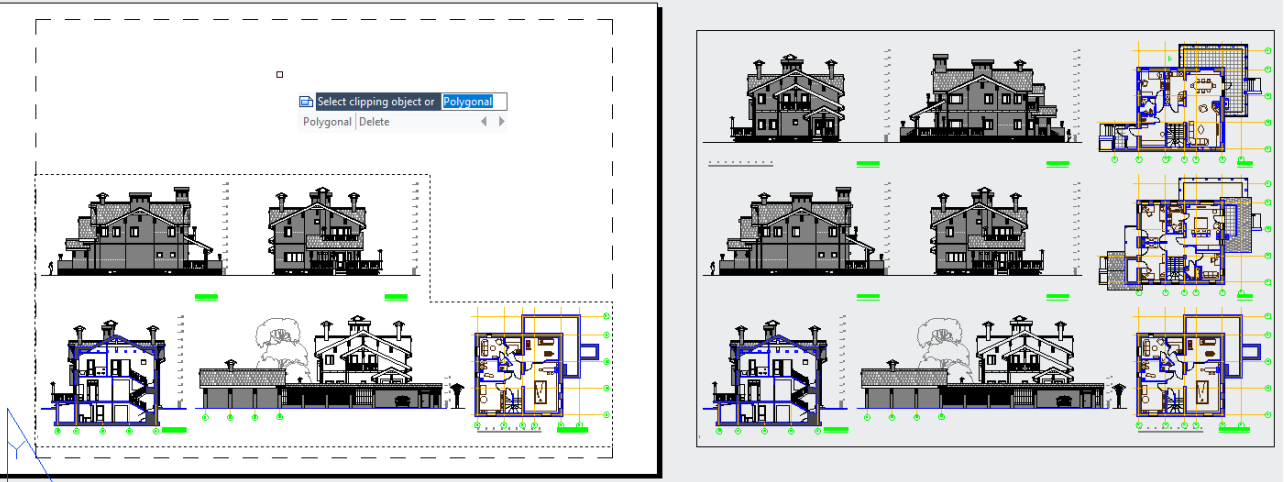
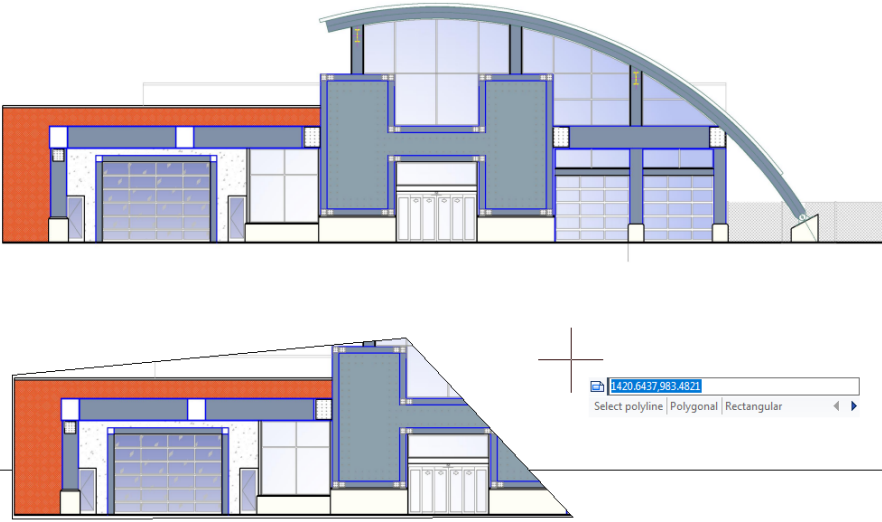


Clip

The new CLIP command clips a block, external reference, image, viewport, and underlay (PDF or DGN) to a specified boundary. It can be used to replace XCLIP, IMAGECLIP, VPCLIP, PDFCLIP, DGNCLIP commands.

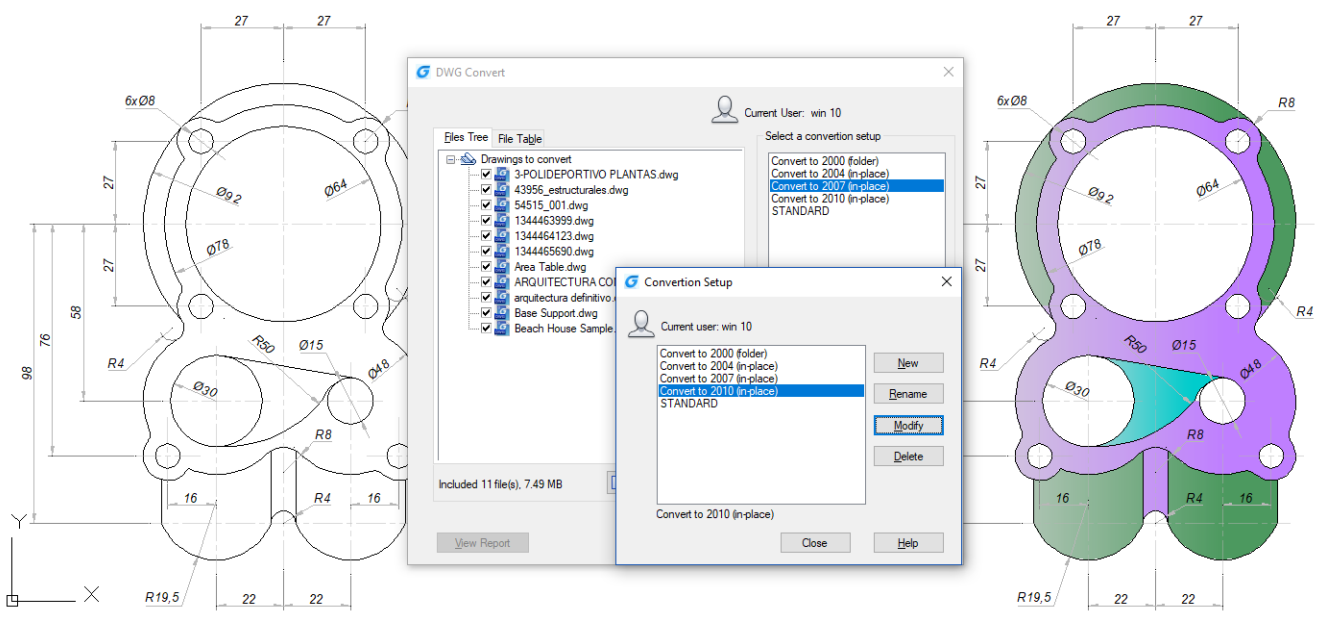
Clip Block





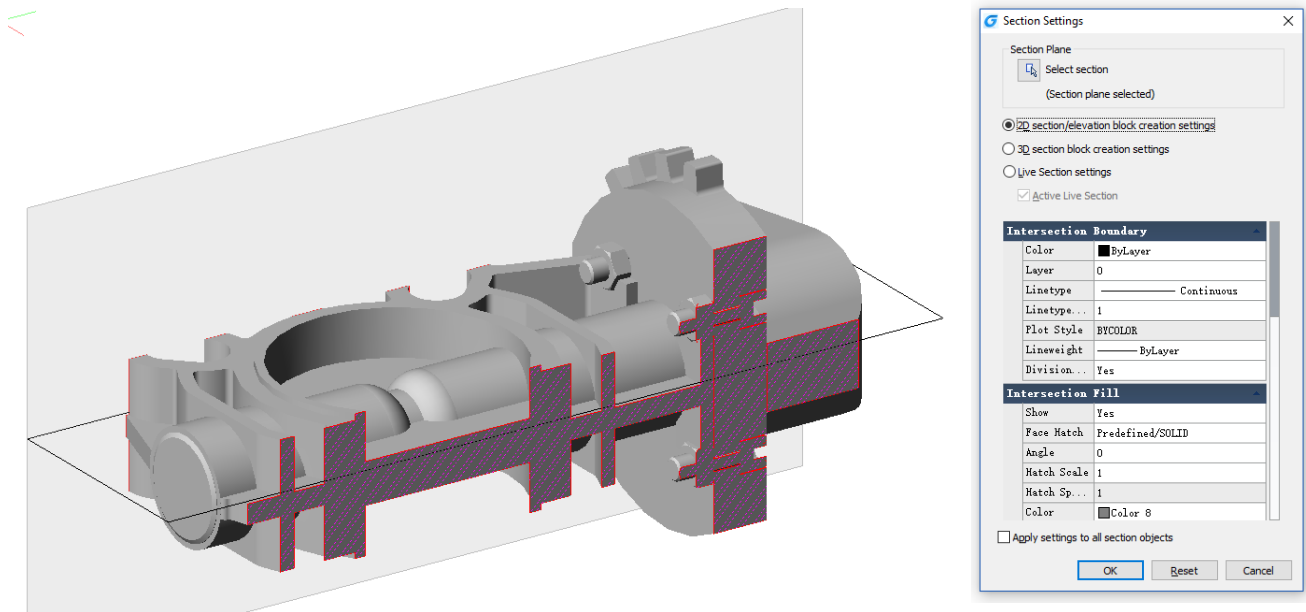
DWG Convert

DWGCONVERT command converts one or a bunch of selected drawing files to another dwg version available. The newly generated file can overwrite the original one, and it can also be compressed into a self-extracting EXE file or a ZIP file to facilitate batch format conversion of the entire project drawing.



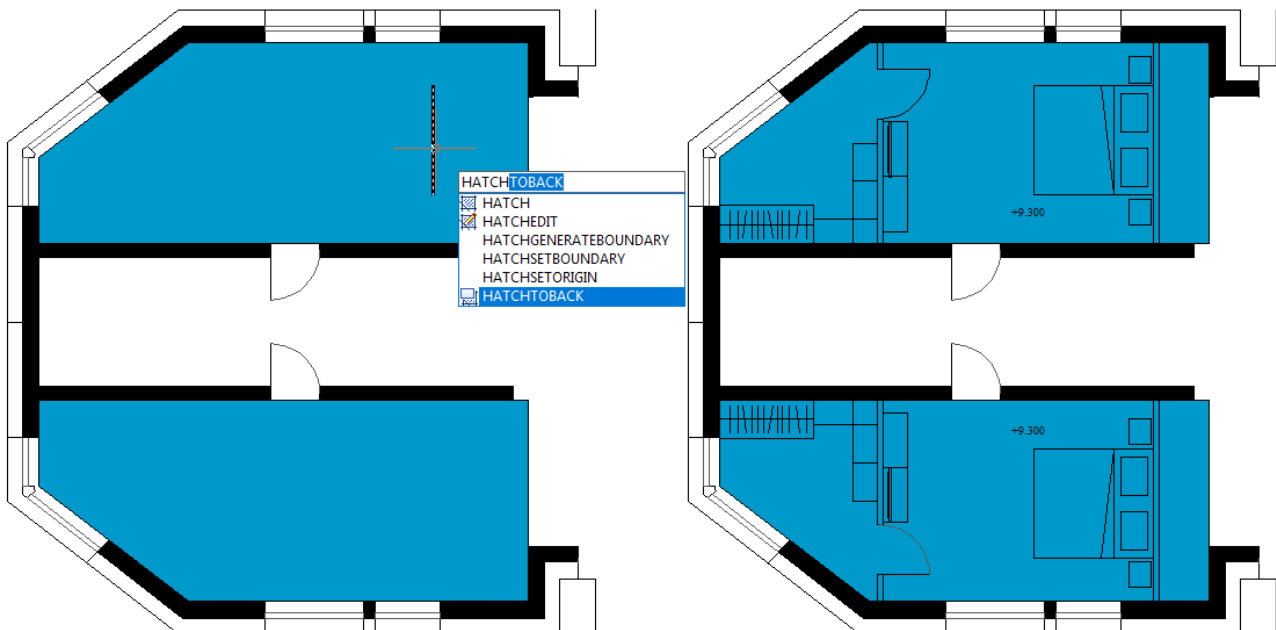
Section Plane

SECTIONPLANE command creates a section object that acts as a cutting plane through 3D objects and saves the selected section plane as a 2D or 3D block. You can move the section object dynamically in a 3D model or in a surface area. You can use the active section to analysis model by moving the section object in the object. Create cross-sectional views that can be saved or reused.



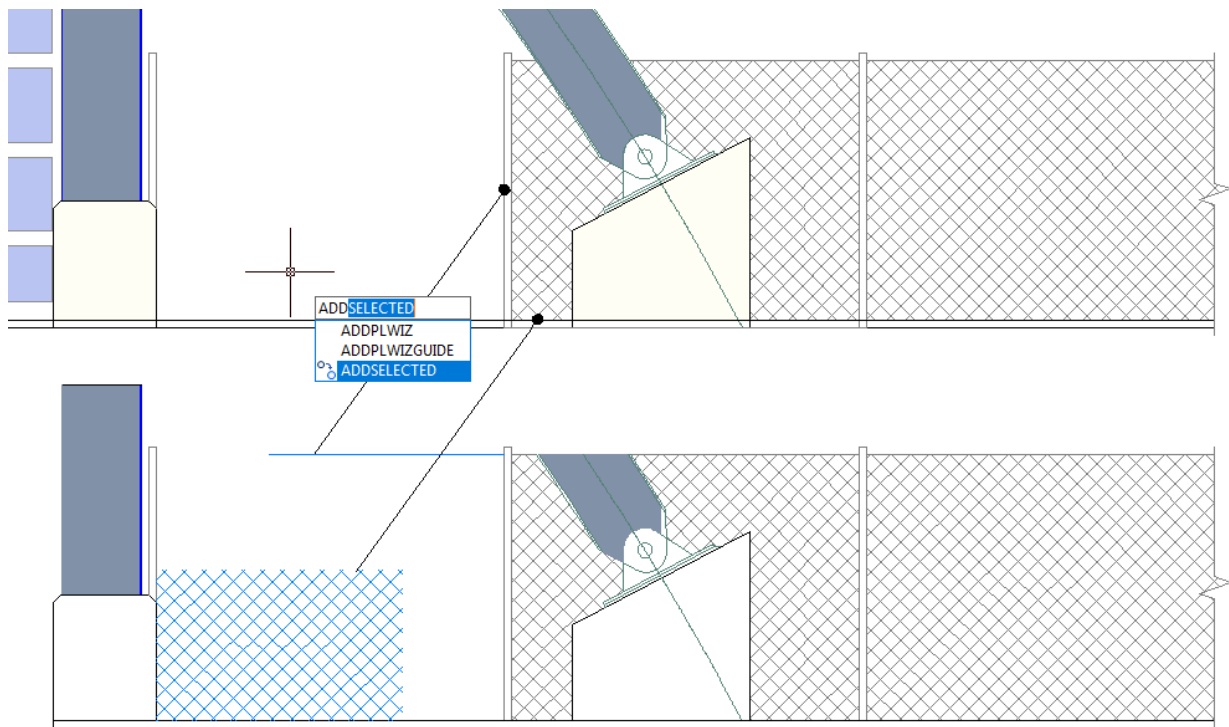
Hatch to Back

In order to avoid a filling pattern blocks any text, label or other graphics on the current drawing, you can set the display order of all the fill patterns to back position from all other objects with HATCHTOBACK command.



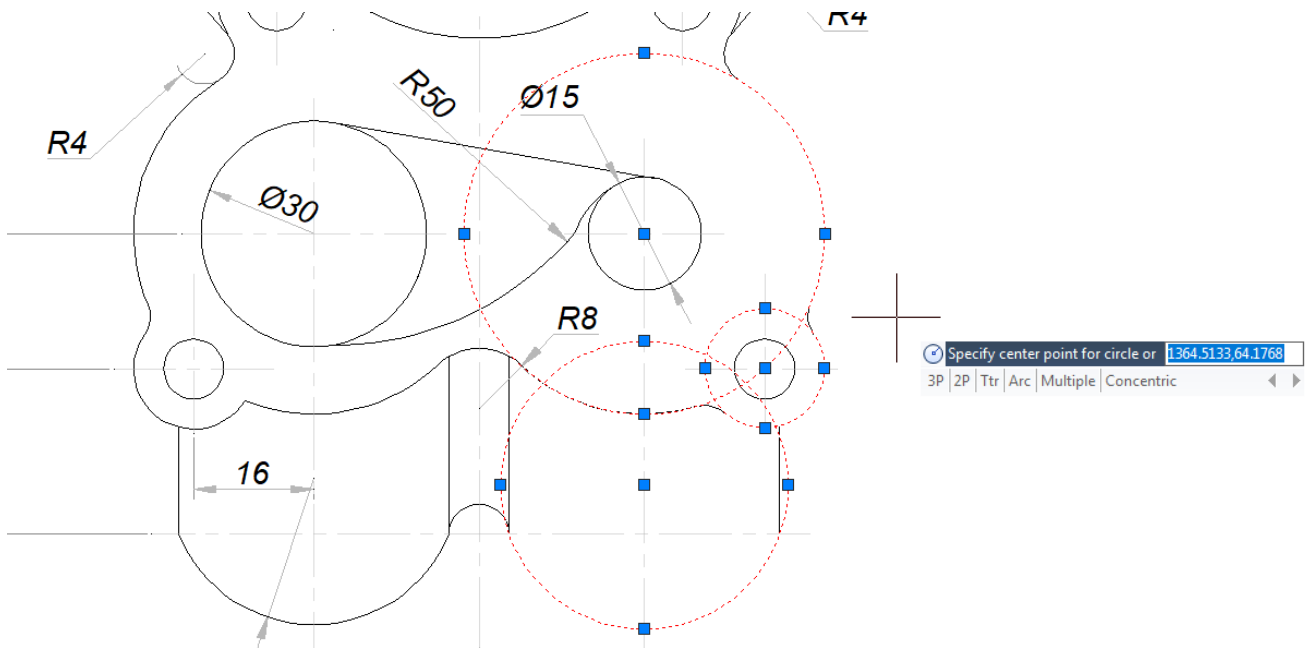
Add Selected

ADDSELECTED command creates a new object of the same type and properties as selected object but with different geometric values.



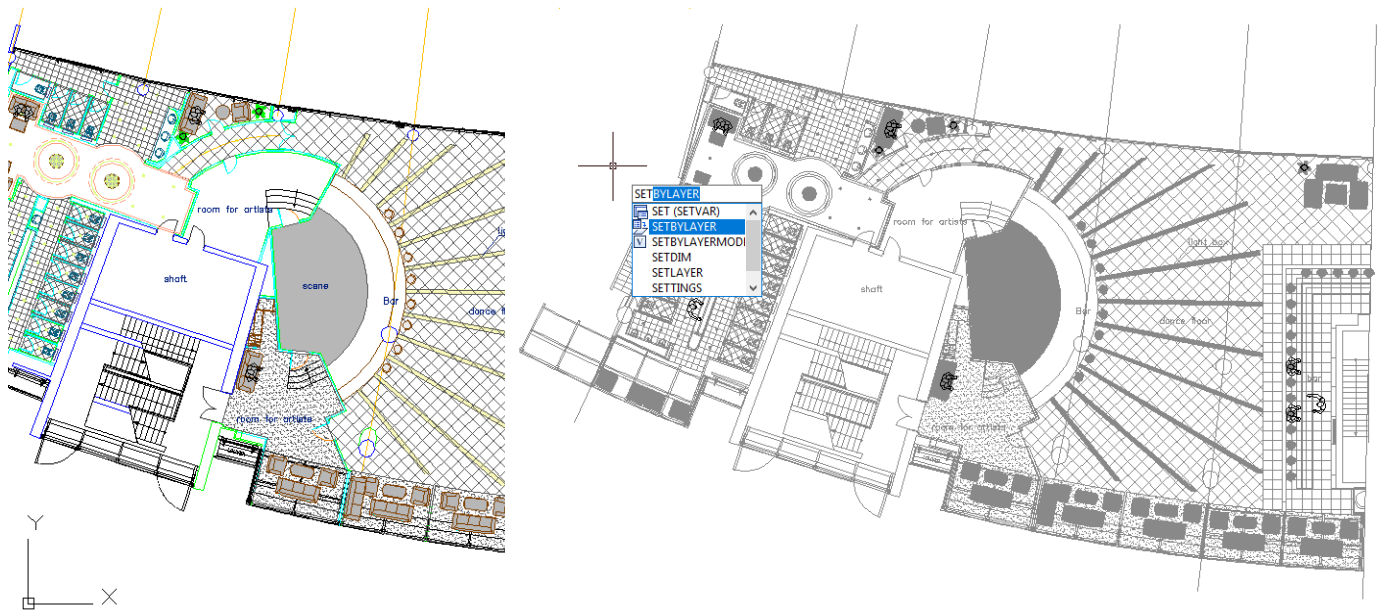
Multiple

MULTIPLE command executes a command repetitively, avoiding press enter or space bar key.



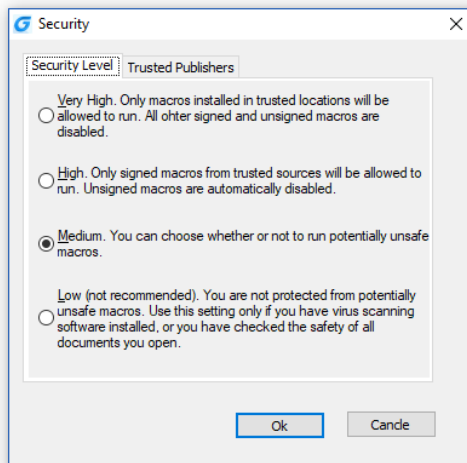
Change to Bylayer

SETBYLAYER command changes the property of the selected objects to ByLayer including color, line type, line weight, and materials.



Security

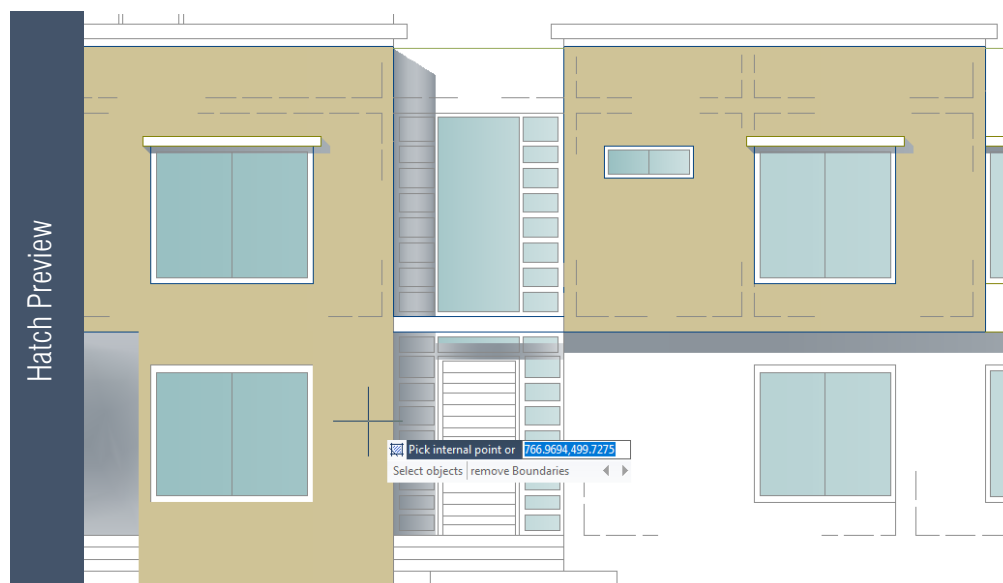
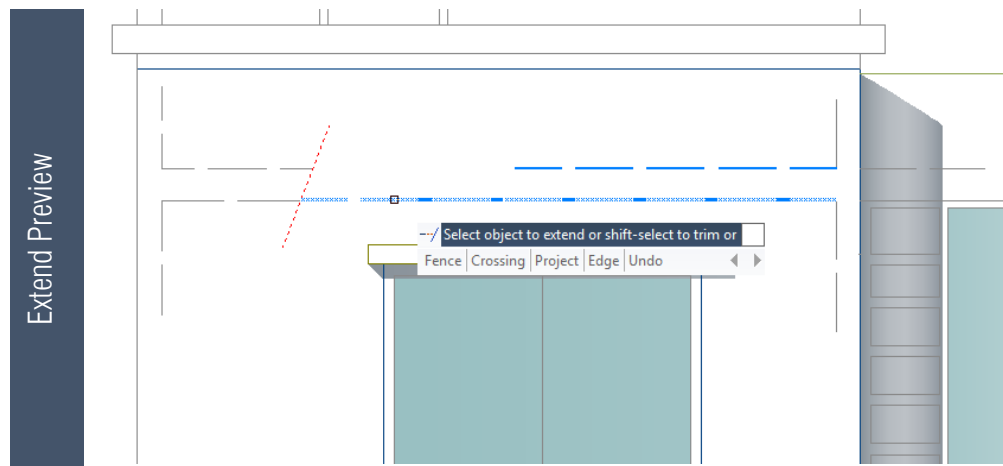
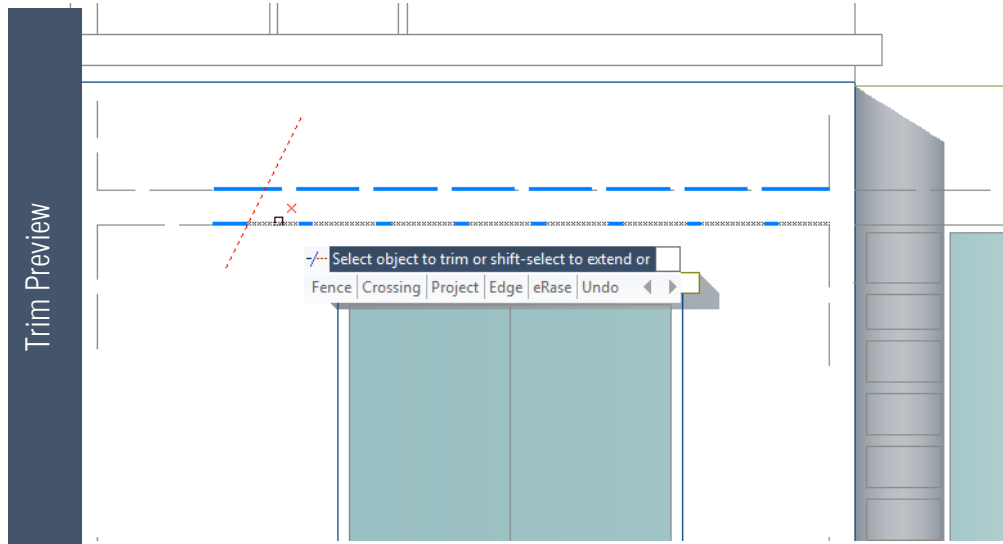
SECURITY command sets the system security monitoring level, and display or delete the current trusted publisher certificate. Unnamed VBA project files can be loaded without warning.



Enhanced Features to Quick Accomplish Difficult Tasks

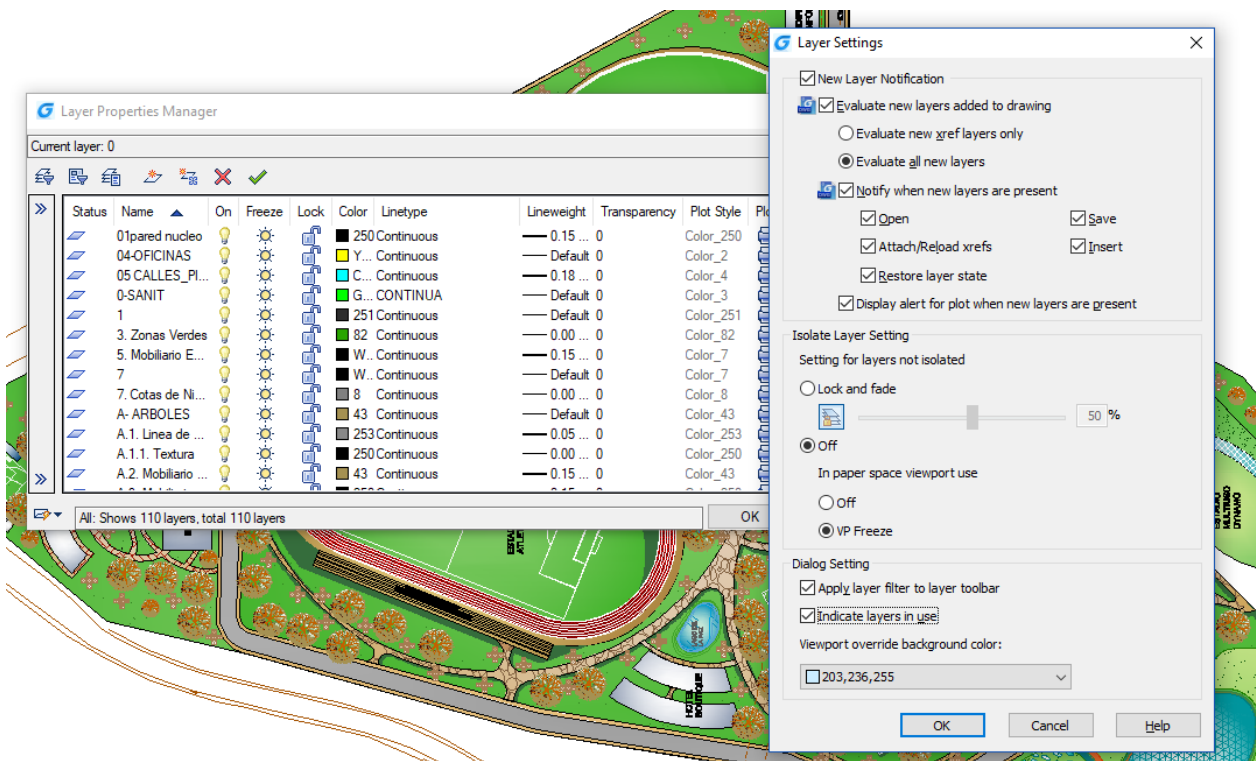
Command Preview

Preview exactly how the result will look like when running command TRIM, EXTEND or HATCH.



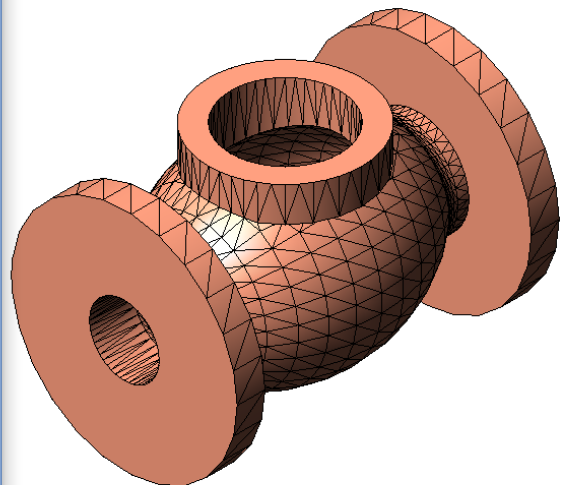
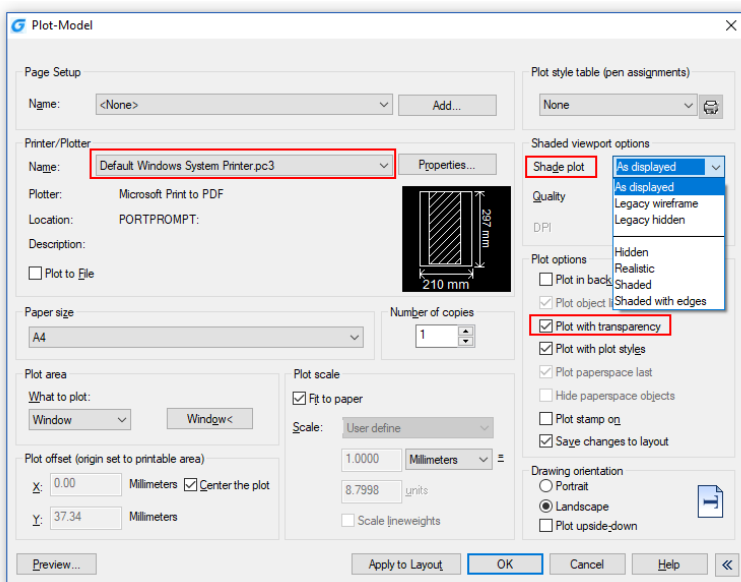
Layer Settings

Adding the Layer Settings option to layer property manager, you can set new layer options, control the time to issue a new layer notice, layer behavior when isolating certain layers, whether to apply a layer filter to the layer's toolbar and the background color of the viewport in the Layer Property Manager, etc.



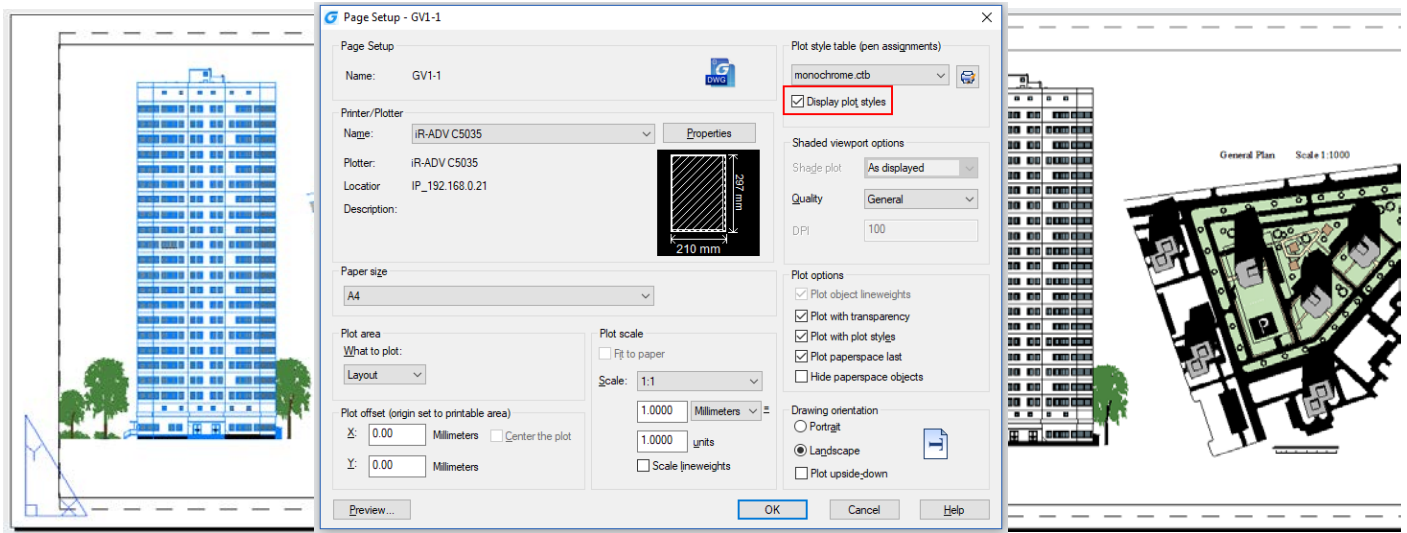
Plot Options

Plot with transparency and Shade Plot options have been implemented into plot dialog box to improve 2D/3D drawing printing quality. Besides plot options, now a "Default Windows System Printer" is supported, so the drawings copied to any machine will automatically use the current machine's default system plot driver.



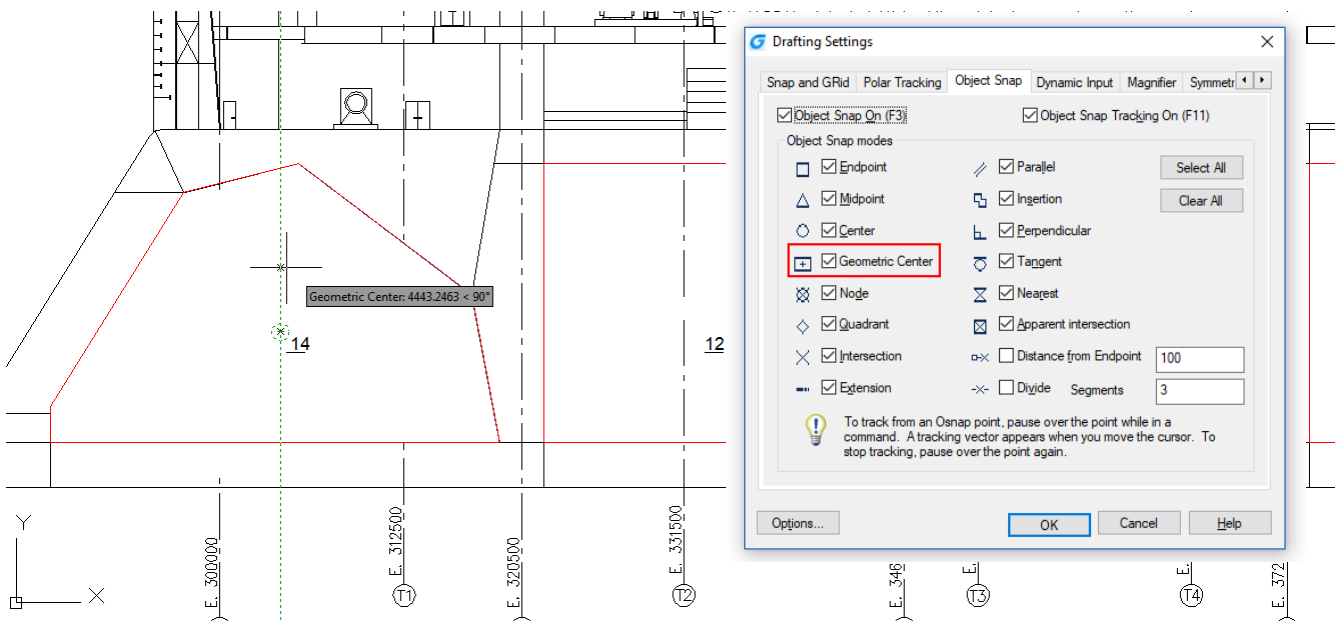
Display Plot Styles

The Page Setup manager for layout supports the Display Plot Styles option. You can assign different plot style tables to each layout in your drawing. Using plot styles gives you great flexibility because you can set them to override other object properties or turn off the override as needed.



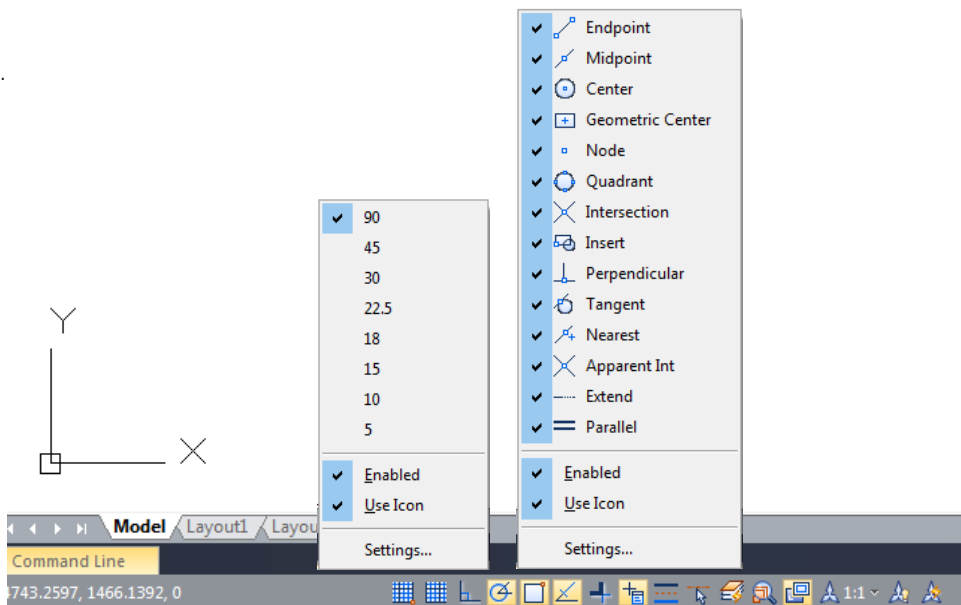
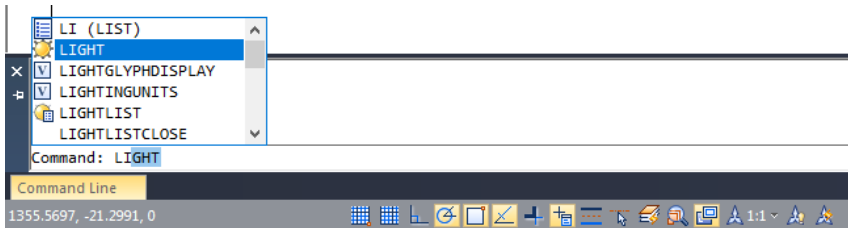
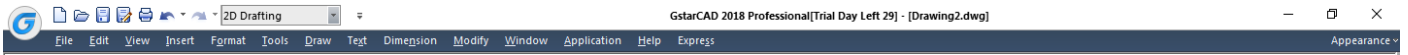
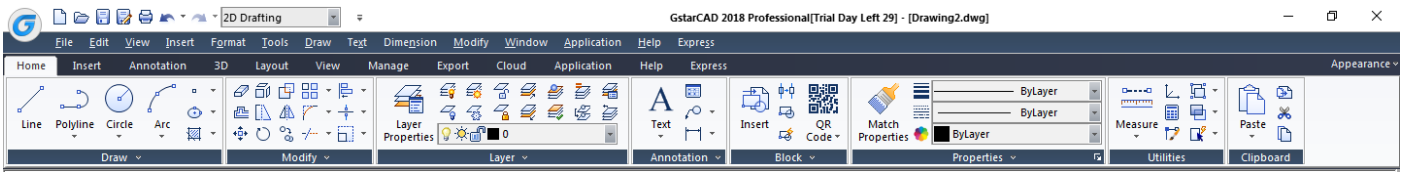
Object Snap (Geometric Center)

A new snap option (Geometric Center) has been added to improve the snap center of any kind of polygonal object.



Ribbon, Command Line and Status Bar

Now you can use the RIBBONCLOSE and RIBBON commands to hide and display the ribbon respectively. When you enter a command at the command line, a list of related commands and variables are displayed for easy recognition and selection. In the status bar, when right clicking the polar track, the object snap and object track button will display a menu with related setting options



Other Enhanced Features

Dynamic Grip Menu

“Show Dynamic Grip Menu” option has been added into selection set tab of options dialog box, you can also switch this option through GRIPMULTIFUNCTIONAL variable.

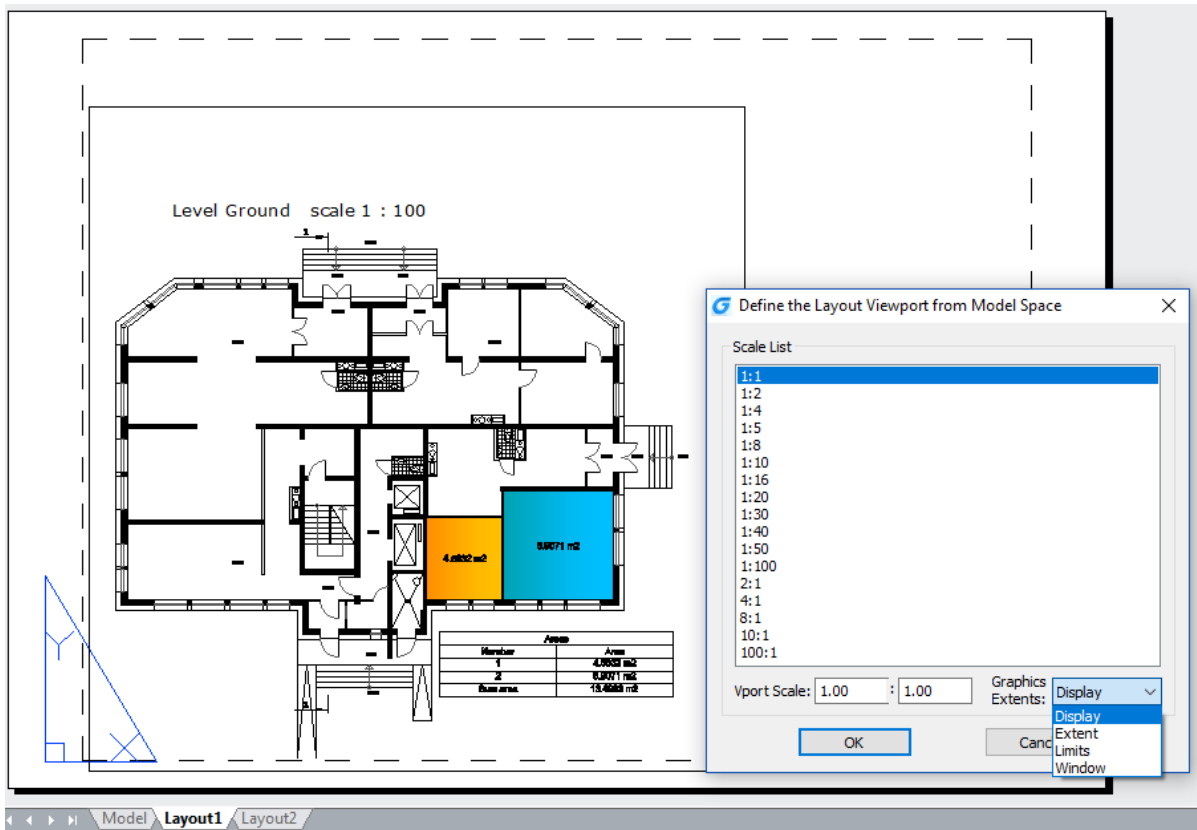
Frame Selection

FRAMESELECTION system variable can control whether the hidden block and the external reference clipping border are selected.

Innovative Tools to Save Time on Drafting and Detailing

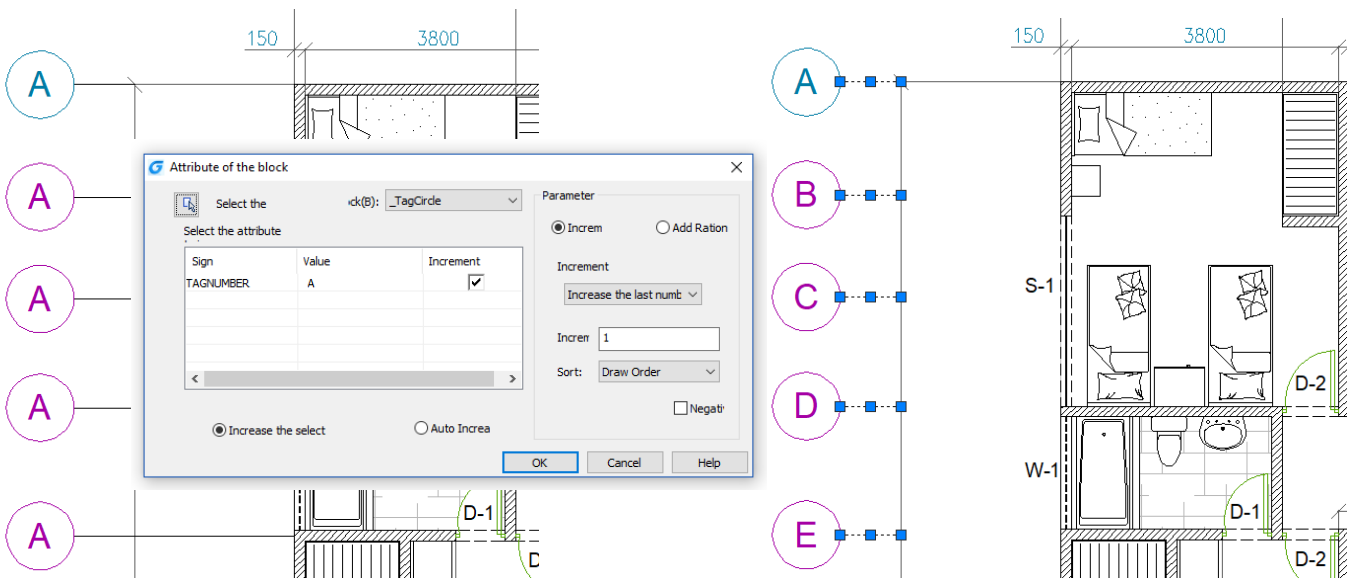
M2LVPORT (Define Layout viewport from Model space)

M2LVPORT command creates a viewport on layout space by specifying an area in the model space. And then calculate the viewport size according to the set ratio and locate the viewport in the layout space. You can quickly create and set a viewport of your drawing.



Attribute Increment

ATTINC command helps to specify attribute of blocks with incremental value, and to modify attribute value of blocks according to the sort method.



Area Table

AREATABLE command automatically dimensions and counts the area of a closed object and export the result to a table in the drawing area.

The drawing shows two areas: a yellow area of 4.5832 m² and a blue area of 8.9071 m². The 'AreaTable' dialog box is open, showing the following settings:

- Border:** Pick Point, Select Obj
- Output:** File Output checked, Path: C:\Users\win 10\Documents\AREA TABLE...
- Text Settings:** Dim Area selected, Text Style: Standard, Text Height: 2.5, Text Location: Area Centr, Start Number: 1, Area Prefix: , Area Suffix: , Number Prefix: , Number Suffix: .
- Table Settings:** Create Table checked, Associate Number unchecked, Calculate Sum Area checked, Table Style: Standard, Title: Area Table, First Header: Number, Second Header: Area.
- Transform Units:** Units From: Square mete, Units To: Square mete, Ratio: 1 : 1.

Areas	
Number	Area
1	4.5832 m ²
2	8.9071 m ²
Sum area	13.4903 m ²

Auto Layer

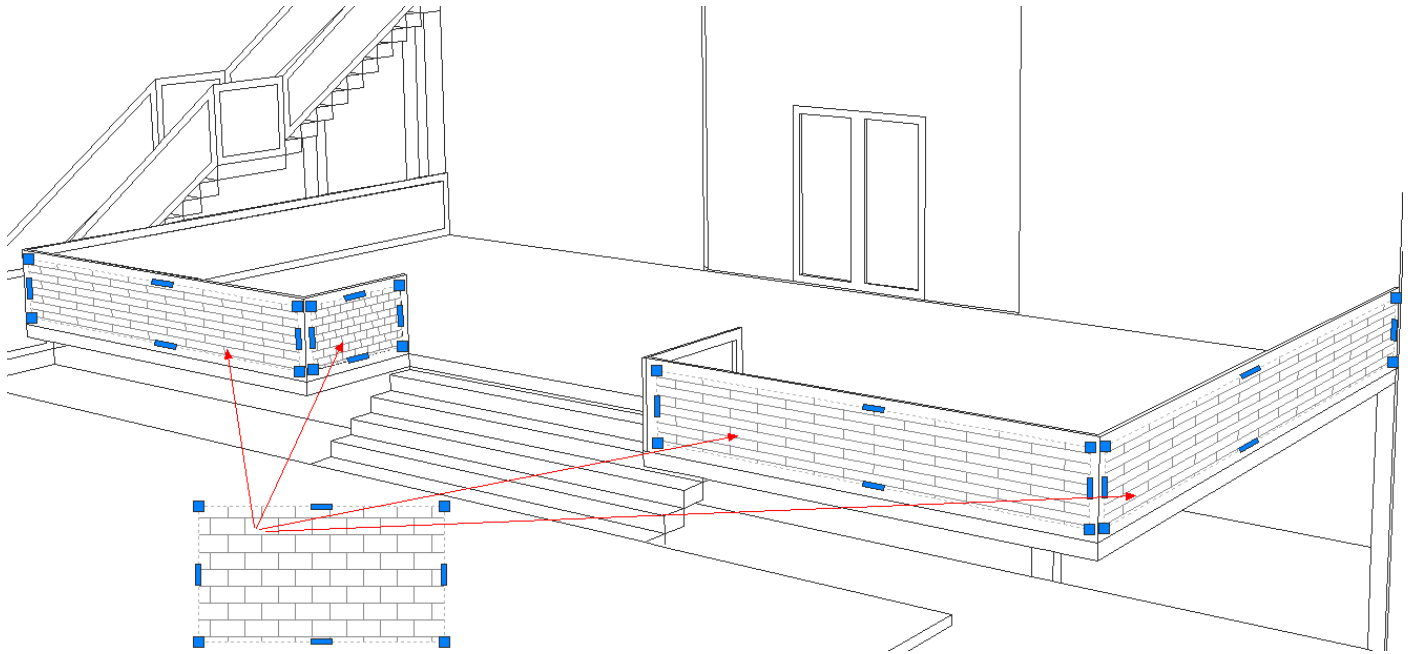
AUTOLAYER command allows you to customize and predefine the associated layer of command to streamline drafting workflow.

The drawing shows a mechanical part with dimensions 117.67 and 142.39. Callouts A and B point to specific features. The 'Autolayer' dialog box is open, showing the following settings:

Command	Layer	Color	Linetype	Lineweight
line	LINE	150	CENTER	Default
*hatch	HATCH	212	Continuous	Default
dimlinear	DIML	30	Continuous	Default
mleader	MLEAD	150	Continuous	Default

Free Scale

FREESCALE command allows you to scales an object or a group of objects without restrictions under three methods; Non-Uniform, Rectangle and Free.



About GstarCAD

GstarCAD is the most DWG/DXF compatible CAD software solution in the world. Empowered by a high performance engine with powerful functions and familiar interface, GstarCAD helps users to design and share drawings much faster and port applications much easier.

About Gstarsoft

Gstarsoft is the recognized leading provider of 2D/3D CAD software solutions for industries like AEC, Civil Engineering, Mechanical, Manufacturing, Electrical, Electronics, GIS, Survey, Mapping, etc. With more than 20 years of proud history of technology innovation and practical application, Gstarsoft now provides the most powerful and DWG compatible CAD software solutions for customers and partners worldwide.